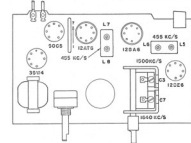
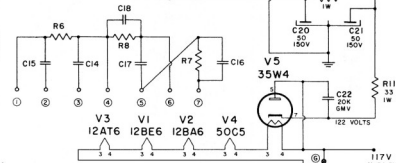


IF ALIGNMENT 455 Kc/s.

1. Turn the gang to the fully open position.
2. Connect the direct output of the generator via a .05 μ F capacitor to the stator lug of the rear section of the gang. Set the generator to 455 Kc/s.
3. Adjust L8, L7, L6 and L5 in that order for maximum output.

RF ALIGNMENT

1. Set the RF generator to 1640 Kc/s and connect the dummy output via a 200 μ F capacitor to the antenna terminal.
2. Adjust C7 for maximum output.
3. Set to 1500 Kc/s and tune in the signal on the receiver.
4. Adjust C3 for maximum output.
5. Check that the receiver tunes through 540 Kc/s and 1600 Kc/s.



**PHILIPS B1C12U & B1C13U
ROGERS MAJESTIC RG1050U & RG1051U**

CLOCK IN
B1C13U/RG1051U
ONLY